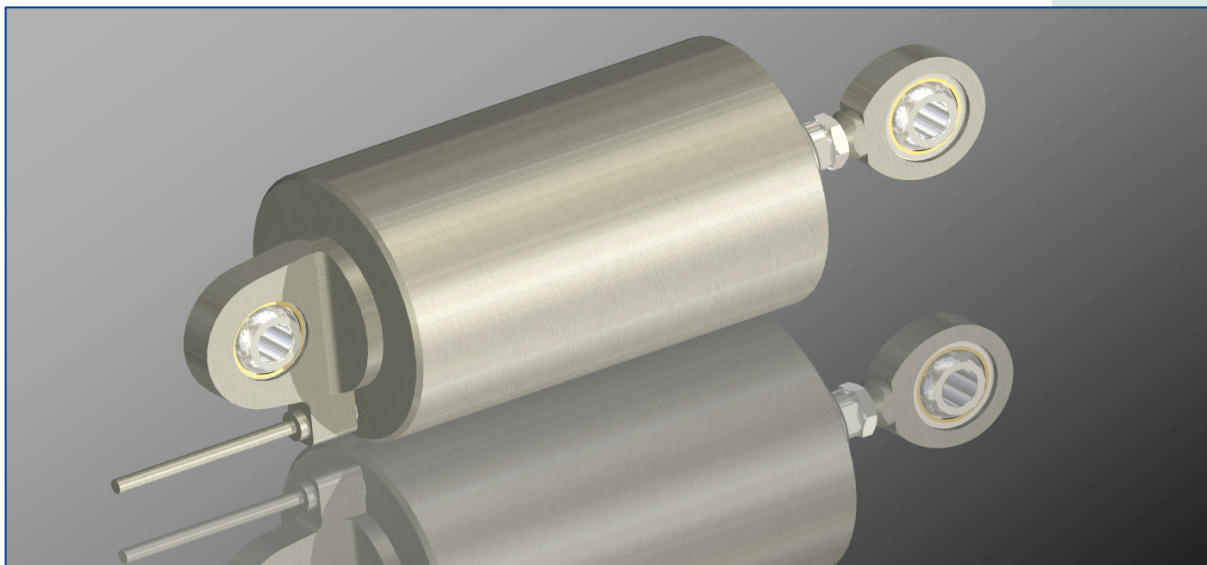




## Small Size EMA

### Performance Specification

Motor Type		3 Phase Brushless	
Winding Type		Dual Channel , Redundant windings	
Commutation Sensor		VR Resolver	
Stroke		25.4mm	1.0 in
Rate		50.4mm / sec	2.0 in / sec
Force (at Rate Above)		627 N	141 lbf
Force (at reduced rate)		1913 N	430 lbf
Accuracy		± 2.5% of full stroke	
Operating Environment	Continuous	-50°C to 121°C	- 65 to +250°F
	10% of life	177°C	350°F
Operating Voltage		26 to 33 Vdc	
Connectors		2-off Integral, MIL standard connectors	
Sealing		RTCA/DO-160D	
Weight		1.47 Kg – 3.2 lb	
Life		175,000 hours on aircraft	
		600,000 full stroke cycles from retract, to extend, to retract.	



**AMETEK**  
**MUIRHEAD AEROSPACE**  
[www.muirheadaerospace.com](http://www.muirheadaerospace.com)

A business unit of AMETEK AEROSPACE & DEFENSE

**Muirhead Aerospace**  
 Oakfield Road Penge  
 London SE20 8EW – UK  
 Tel : +44 (0) 20 8659 9090  
 Fax : +44 (0) 20 8659 9906  
 Email : [muirheadaerospace.sales@ametek.co.uk](mailto:muirheadaerospace.sales@ametek.co.uk)